




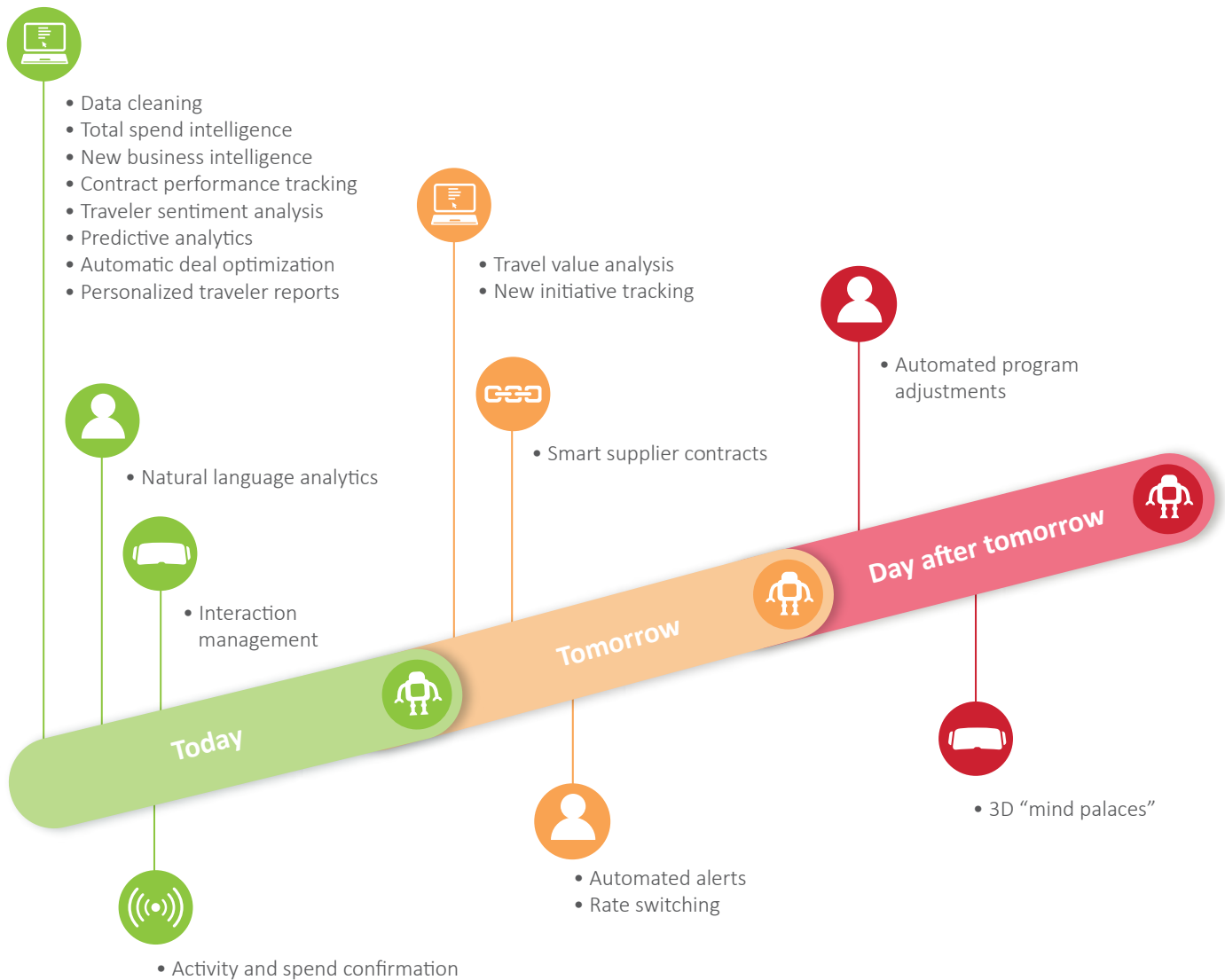





Performance Management Emerging technology and travel management

Technology delivers better-run travel programs

					
What it means	Machine learning A form of artificial intelligence, where software improves its performance by learning from the past.	Blockchain A distributed database, in which information is controlled by independent people.	Bots and virtual assistants Software that can substitute a human, being able to provide personalized responses and perform other tasks based on machine learning.	Augmented and virtual reality Technologies, creating an immersive computer-generated environment (VR) or using virtual information to enhance the real world (AR).	Internet of Things A network of connected intelligent devices using the Internet to communicate.
What it means for performance management	Taking travel programs to the next level.	Delivering certainty to program performance.	Making productive use of travel data.	From travel to interaction management.	A new source of travel data.

How emerging technologies can transform performance management



			
Getting the best from emerging technology	Consider your role Plan to spend more time making decisions.	Review your goals Understand and measure true success.	Update your processes Migrate to dynamic, continuous sourcing.